



April 2019

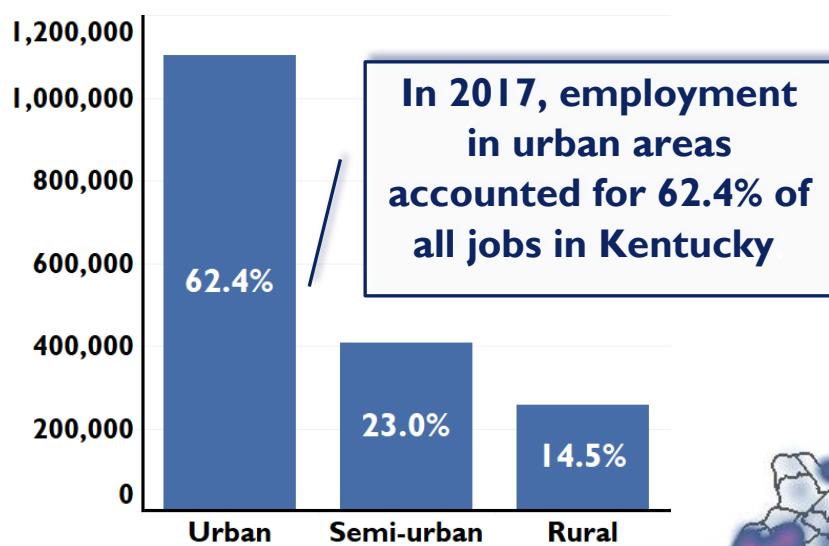
# KENTUCKY

## LABOR FORCE UPDATE

### The Urbanicity of Kentucky Employment and Wages

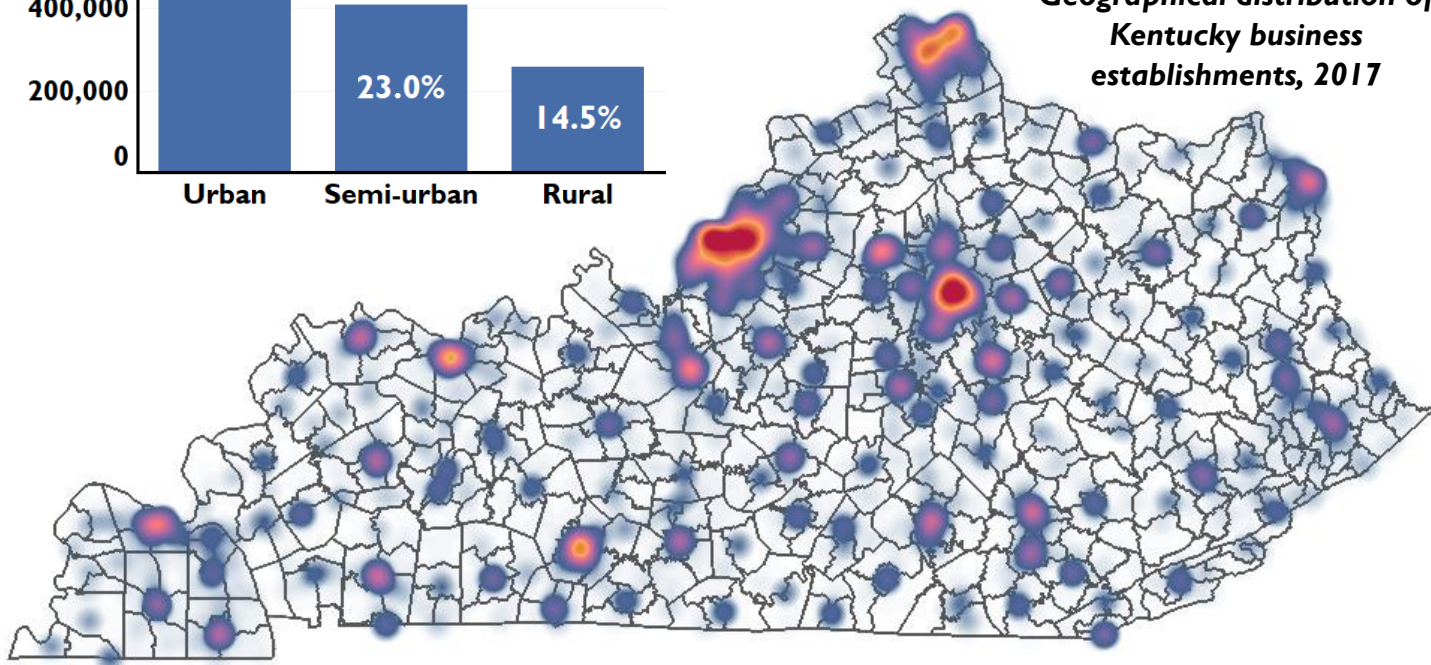
Where do Kentuckians work? What portion of the Commonwealth's jobs are in urban, semi-urban, and rural areas? Are all industries distributed evenly? And do worker's wages differ by geography? The following analysis explores these questions using 2017 annual data from Kentucky's Quarterly Census of Employment and Wages (QCEW) program<sup>1</sup>. Geocodable QCEW microdata<sup>2</sup> was aggregated by Census tract, and analyzed using Rural-Urban Commuting Area (RUCA) designations<sup>3</sup> from the Rural Health Research Center (RHRC), which are assigned based on the size of the flow of workers who commute to and from an area.

#### 2017 Total Employment by Geographical Designation



In 2017, the average monthly employment of urban areas in Kentucky was 1,102,234. Semi-urban areas (e.g. 'micropolitan' areas) accounted for 406,945 jobs, and rural areas (including small towns) accounted for only 256,549 jobs. In total, business establishments in non-urban areas were responsible for 37.5% of the state's total employment.

#### Geographical distribution of Kentucky business establishments, 2017



### ALSO IN THIS ISSUE:

- ◇ Labor Force Estimates (LAUS) Feb. 2019
- ◇ Labor Force Estimates (CES) Feb. 2019

- ◇ Unemployment Ins. Claims Feb. 2019
- ◇ KYSTATS in the News



# Contents

---

<b>The Urbanicity of Kentucky Employment and Wages</b>	<b>I</b>
<b>February 2019 Labor Force Estimates (LAUS)</b>	<b>4</b>
<b>February 2019 Labor Force Estimates (CES)</b>	<b>5</b>
<b>Unemployment Insurance Claims, February 2019</b>	<b>6</b>
<b>Fun Facts – Administrative Professionals</b>	<b>7</b>
<b>KYSTATS in the News</b>	<b>8</b>

---

## **Kentucky Labor Force Update**

A monthly publication of the  
Kentucky Center for Statistics (KYSTATS)  
**Jessica Cunningham, Ph.D., Interim Executive Director**  
**Ashley Jones, Labor Market Information Branch Manager**

Kentucky Center for Statistics  
1050 Hwy US-127  
Frankfort, KY 40601  
KYSTATS.KY.GOV

For requests and inquiries, contact  
Sam Keathley • Samuel.Keathley@ky.gov • 502.782.3208

Contributors to *Kentucky Labor Force Update* this month:  
Kimberly Gester, Kasi House, Sam Keathley, Logan Rupard

Material contained in this publication is in the public domain and may be reproduced without special permission, provided that source credit is given to:

*Kentucky Labor Force Update, Kentucky Center for Statistics*

Subscriptions, additional copies, and back issues available free of charge upon request.



# The Urbanicity of Kentucky

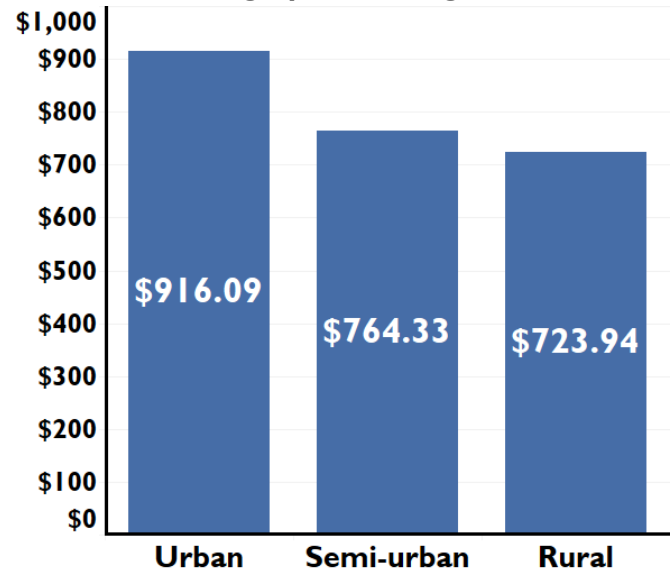
## Employment and Wages

Wages paid to Kentucky workers differ by geography. Those in urban areas earned, on average, at least \$152 more per week than those in semi-urban areas, and at least \$192 more than those in rural areas. In total, more than \$52.5 billion was paid to workers in urban areas in 2017, \$16.2 billion was paid to workers in semi-urban areas, and \$9.7 billion was paid to workers in rural areas.

Urban employment comprised the majority of jobs within 17 of 20 major industries in 2017. Eighty-nine percent of all jobs in the Management of Companies and Enterprises industry were in urban areas, making it the most heavily urban of all industries.

Employment in semi-urban areas did not comprise the majority of jobs in any industry; Public Administration had the largest contingent (31.5%) of its employment in this geographical designation compared to other industries. Mining, Quarrying, and Oil and Gas Extraction is unique among industries, in that a majority of its jobs (59.1%) are in rural tracts, and those jobs provide the highest average weekly wage of any industry in rural areas (\$1,334).

**2017 Average Weekly Wages by Geographical Designation**



**Distribution of Industry Employment by Geographical Designation, 2017**

	Rural	Semi-urban	Urban
Accommodation and Food Services	12.6%	22.2%	65.2%
Admin and Support, Waste Mgmt, Remediation Services	6.7%	23.3%	69.9%
Agriculture, Forestry, Fishing and Hunting	26.8%	25.9%	47.3%
Arts, Entertainment, and Recreation	10.9%	16.0%	73.1%
Construction	11.2%	20.5%	68.3%
Educational Services	20.2%	21.9%	57.9%
Finance and Insurance	9.5%	14.6%	75.9%
Health Care and Social Assistance	16.1%	21.4%	62.5%
Information	13.3%	23.0%	63.7%
Management of Companies and Enterprises	2.5%	9.0%	88.6%
Manufacturing	18.7%	30.1%	51.3%
Mining, Quarrying, and Oil and Gas Extraction	59.1%	26.5%	14.4%
Other Services (except Public Administration)	11.3%	18.5%	70.1%
Professional, Scientific, and Technical Services	7.2%	17.1%	75.7%
Public Administration	23.7%	31.5%	44.8%
Real Estate and Rental and Leasing	8.7%	18.0%	73.3%
Retail Trade	15.7%	24.8%	59.5%
Transportation and Warehousing	8.0%	24.2%	67.8%
Utilities	20.2%	29.4%	50.4%
Wholesale Trade	8.1%	18.8%	73.1%

### Summary

The majority of jobs in Kentucky are concentrated in urban areas. This holds true for most industries, with a few exceptions where rural and semi-urban employment combines to account for the majority of the industry's employment. Mining, Quarrying, and Oil and Gas extraction is the state's only primarily rural industry.

Urban workers also earn more than those in semi-urban and rural areas. In total, workers in urban areas were paid \$26.5 billion more than those in semi-urban and rural areas in 2017.

<sup>1</sup> The QCEW program covers only those employers who participate in Kentucky's Unemployment Insurance (UI) program.

<sup>2</sup> Only those employers for which the QCEW program possesses a geocodable physical address on file are included in this analysis. Perceived discontinuity with other publications of QCEW employment and wage data may result from the exclusion of non-geocodable employers.

<sup>3</sup> Standard RUCA codes have been binned for the purposes of this analysis. The 'Urban' bin is comprised of RUCA codes 1,2,3. The 'Semi-urban' bin is comprised of RUCA codes 4,5,6. The 'Rural' bin is comprised of RUCA codes 7,8,9,10.

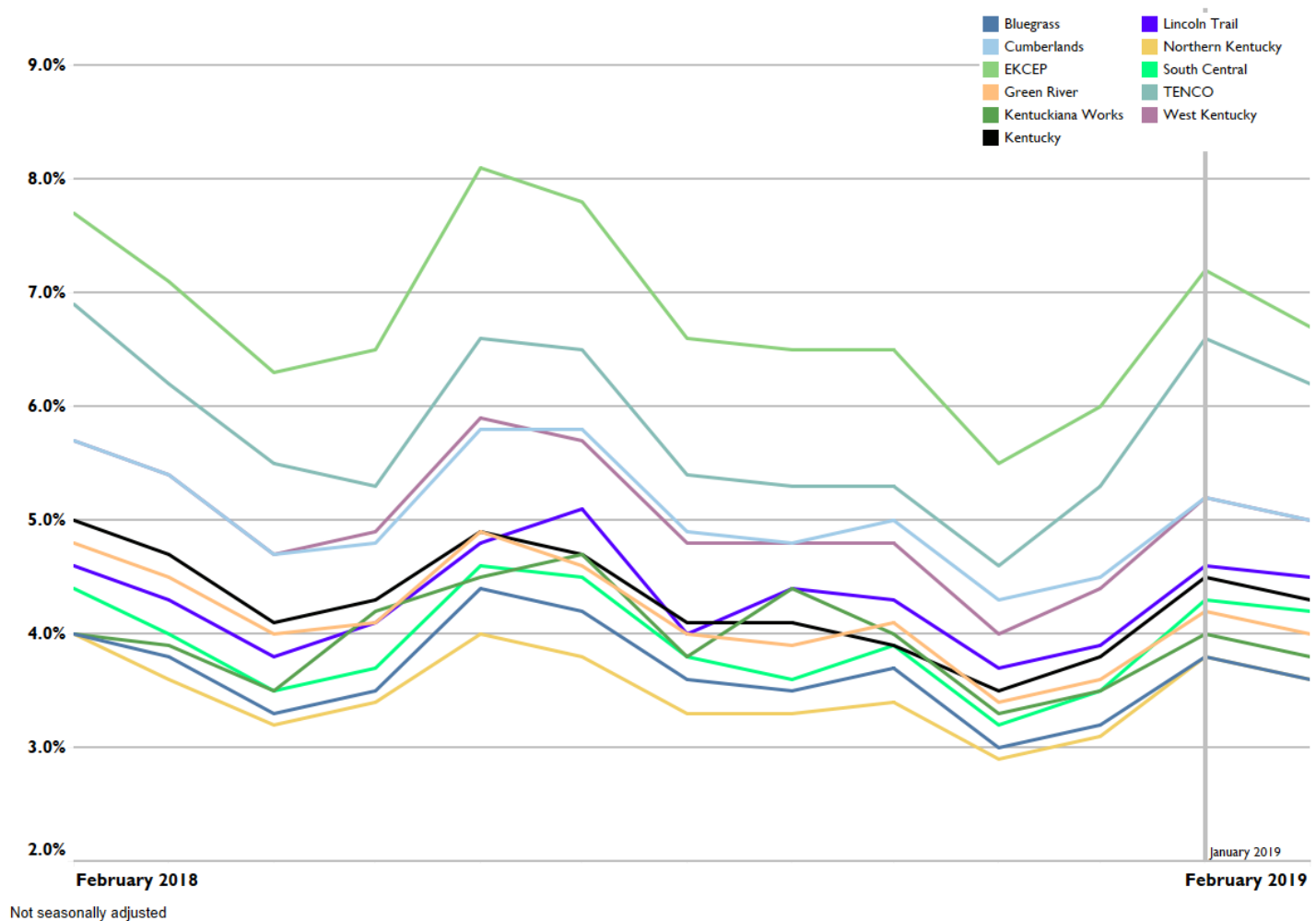


# February 2019 Labor Force Estimates (LAUS)

Source: KYSTATS, Local Area Unemployment Statistics (LAUS)\*

	Feb 2019	Jan 2019	Feb 2018	OVER-the-MONTH		OVER-the-YEAR	
				Change	Rate	Change	Rate
Civilian Labor Force	2,063,180	2,063,483	2,056,696	-303	0.0%	6,484	0.3%
Employment	1,979,620	1,976,696	1,968,150	2,924	0.1%	11,470	0.6%
Unemployment	83,560	86,787	88,546	-3,227	-3.7%	-4,986	-5.6%
Unemployment Rate	4.1%	4.2%	4.3%	-0.1%	-	-0.2%	-
U.S. Unemployment Rate	3.8%	4.0%	4.1%	-0.2%	-	-0.3%	-

## Unemployment Rate by Local Workforce Area and State



\* Data are seasonally adjusted. February 2019 data are preliminary and subject to revision.



# February 2019 Labor Force Estimates (CES)

Source: KYSTATS, Current Employment Statistics (CES)\*

	Feb 2019	Jan 2019	Feb 2018	OVER-the-MONTH		OVER-the-YEAR	
				Change	Rate	Change	Rate
<b>Total Nonfarm Employment</b>	<b>1,949,900</b>	<b>1,948,500</b>	<b>1,928,800</b>	<b>1,400</b>	<b>0.1%</b>	<b>21,100</b>	<b>1.1%</b>
<b>Private Sector Employment</b>	<b>1,636,800</b>	<b>1,635,000</b>	<b>1,614,400</b>	<b>1,800</b>	<b>0.1%</b>	<b>22,400</b>	<b>1.4%</b>
<b>Goods Producing Industries</b>	<b>345,600</b>	<b>344,300</b>	<b>339,100</b>	<b>1,300</b>	<b>0.4%</b>	<b>6,500</b>	<b>1.9%</b>
Mining and Logging	10,200	10,300	9,600	-100	-1.0%	600	6.3%
Construction	81,300	80,300	77,800	1,000	1.2%	3,500	4.5%
Manufacturing	254,100	253,700	251,700	400	0.2%	2,400	1.0%
Durable Goods	164,700	164,300	163,600	400	0.2%	1,100	0.7%
Non-durable Goods	89,400	89,400	88,100	0	0.0%	1,300	1.5%
<b>Private Service Providing Industries</b>	<b>1,291,200</b>	<b>1,290,700</b>	<b>1,275,300</b>	<b>500</b>	<b>0.0%</b>	<b>15,900</b>	<b>1.2%</b>
Trade, Transportation, & Utilities	408,400	407,400	403,800	1,000	0.2%	4,600	1.1%
Wholesale Trade	75,700	75,700	74,900	0	0.0%	800	1.1%
Retail Trade	213,600	213,300	215,700	300	0.1%	-2,100	-1.0%
Transp, Warehousing, & Util.	119,100	118,400	113,200	700	0.6%	5,900	5.2%
Information	21,900	21,700	22,100	200	0.9%	-200	-0.9%
Financial Activities	93,700	93,500	92,800	200	0.2%	900	1.0%
Finance and Insurance	73,300	73,500	73,400	-200	-0.3%	-100	-0.1%
Real Estate, Rental & Leasing	20,400	20,000	19,400	400	2.0%	1,000	5.2%
Professional and Business Services	218,600	217,900	217,800	700	0.3%	800	0.4%
Prof, Scientific, & Tech Services	78,200	77,600	76,000	600	0.8%	2,200	2.9%
Management of Companies	20,500	20,800	20,300	-300	-1.4%	200	1.0%
Admin & Support & Waste Mgmt	119,900	119,500	121,500	400	0.3%	-1,600	-1.3%
Educational & Health Services	283,900	283,600	275,900	300	0.1%	8,000	2.9%
Educational Services	30,100	30,300	29,300	-200	-0.7%	800	2.7%
Health Care & Social Assistance	253,800	253,300	246,600	500	0.2%	7,200	2.9%
Leisure and Hospitality	198,800	199,600	197,500	-800	-0.4%	1,300	0.7%
Arts, Entertainment & Recreation	23,600	23,400	22,700	200	0.9%	900	4.0%
Accommodation & Food Services	175,200	176,200	174,800	-1,000	-0.6%	400	0.2%
Other Services	65,900	67,000	65,400	-1,100	-1.6%	500	0.8%
<b>Government</b>	<b>313,100</b>	<b>313,500</b>	<b>314,400</b>	<b>-400</b>	<b>-0.1%</b>	<b>-1,300</b>	<b>-0.4%</b>
Federal	36,300	36,100	36,200	200	0.6%	100	0.3%
State	93,700	94,300	95,000	-600	-0.6%	-1,300	-1.4%
Local	183,100	183,100	183,200	0	0.0%	-100	-0.1%

\* Data are seasonally adjusted. February 2019 data are preliminary and subject to revision.





# Unemployment Insurance Claims February 2019 (Kentucky, Statewide)

Source: U.S. Dept. of Labor, Employment and Training Administration

Month	Initial Claims	First Payments	Weeks Claimed	Weeks Compensated	Average Weekly Benefit	Benefits Paid	Final Payments
2/28/2018	11,053	4,450	96,918	85,251	\$342.91	\$28,589,923	1,429
3/31/2018	8,670	3,448	88,059	78,794	\$334.01	\$26,414,438	1,013
4/30/2018	9,593	2,786	75,397	73,360	\$338.85	\$24,936,012	1,188
5/31/2018	17,484	3,302	74,279	66,733	\$340.04	\$22,776,755	1,119
6/30/2018	15,974	3,549	73,020	63,967	\$332.05	\$21,316,145	1,065
7/31/2018	23,169	5,097	105,655	92,626	\$343.98	\$31,915,100	1,565
8/31/2018	8,393	3,316	72,220	67,823	\$336.07	\$22,891,972	1,381
9/30/2018	17,977	2,997	64,427	72,171	\$340.67	\$24,679,872	1,312
10/31/2018	8,340	2,817	70,942	62,601	\$346.01	\$21,718,218	1,308
11/30/2018	11,629	2,553	60,459	53,298	\$347.80	\$18,585,342	982
12/31/2018	16,320	3,393	66,452	57,885	\$343.45	\$19,967,923	1,061
1/31/2019	17,896	6,795	93,400	78,628	\$345.70	\$27,310,045	1,257
2/28/2019	13,347	4,466	87,716	76,053	\$350.53	\$26,770,130	1,103

Data queried from <https://oui.doleta.gov/> on 3/25/2019.



# Fun Facts – Administrative Professionals



The last full week of April is Administrative Professionals Week and April 24<sup>th</sup> is Administrative Professionals Day. During this week, the contributions of secretaries, administrative assistants, executive assistants, and other administrative professionals in the work place are acknowledged. Founded in 1952 by the International Association of Administrative Professionals (IAAP), the week was developed to

recognize the important contributions of administrative personnel to the economy and to help attract workers to the field.

Today's administrative professionals continue to play an integral role in an organization but the job has evolved over time. From office management to event planning, an administrator's job duties can vary greatly depending on the employer's size, structure, and particular needs. According to the American Society of Administrative Professionals (ASAP), the administrative professional job now also requires skillsets such as project management, logistics, communications, tech support and financial skills. Also, instead of working with one manager, today's administrative professional may work with an entire department.

In Kentucky, there are an estimated 40,470 secretaries and administrative assistants (SOC 43-6000), making up 2.2 percent of all occupations in the state.<sup>1</sup> As shown below, the average salary for entry level workers is between \$20,236 and \$31,578 per year depending on the type of position. Experienced workers earn between \$41,128 and \$67,659 per year in these occupations.

SOC	Standard Occupational Classification (SOC) Title	Estimated Employment	Entry Level	Annual Salary				
				Mean	25th Percentile	Median	75th Percentile	Experienced
43-6011	Executive Secretaries and Executive Administrative Assistants	5,320	\$31,578	\$48,498	\$37,883	\$46,901	\$57,352	\$67,659
43-6012	Legal Secretaries	2,730	\$22,928	\$35,150	\$26,746	\$33,584	\$40,514	\$51,886
43-6013	Medical Secretaries	5,360	\$22,028	\$31,578	\$26,235	\$31,066	\$37,034	\$41,128
43-6014	Secretaries and Administrative Assistants, Except Legal, Medical	27,060	\$20,236	\$32,765	\$25,467	\$31,639	\$39,193	\$48,058

<sup>1</sup> Kentucky Center for Statistics, Labor Market Information Branch, Occupational Employment Statistics, 2018

# KYSTATS in the News

The Kentucky Center for Statistics is excited to announce that our biennial data use conference will take place at the Brown Hotel in Louisville this year on September 4<sup>th</sup> and 5<sup>th</sup>.

The conference gives partners and data users an opportunity to learn more about KYSTATS' latest products, interact with our staff and other attendees, and explore new opportunities for collaboration. Mark your calendars and stay tuned for registration information and further details!



The [Civilian Labor Force Report](#) (CLFR) is an interactive report that allows users to explore estimates from the U.S. Bureau of Labor Statistics' Local Area Unemployment Statistics (LAUS) program and the Current Population Survey (CPS).



The [Local Workforce Area Dashboard](#) provides users with information about local workforce areas to help inform the impact of services in the region.



Explore employment and wage outcomes for students at each of Kentucky's postsecondary institutions by major and credential type in our recently updated [Postsecondary Feedback Report](#).

You can learn about recent data releases, research and reports by the Labor Market Information Branch by visiting our website: <https://kystats.ky.gov/KYLM>.



Follow us on Twitter **@KYSTATS** for registration opportunities and event announcements

*This workforce product was funded by a grant awarded by the U.S. Department of Labor's Employment and Training Administration. The product was created by the recipient and does not necessarily reflect the official position of the U.S. Department of Labor. The U.S. Department of Labor makes no guarantees, warranties, or assurances of any kind, express or implied, with respect to such information, including any information on linked sites and including, but not limited to, accuracy of the information or its completeness, timeliness, usefulness, adequacy, continued availability, or ownership. This product is copyrighted by the institution that created it. Internal use by an organization and/or personal use by an individual for non-commercial purposes is permissible. ALL other uses require prior authorization by the copyright owner.*

Published 4/18/2019